



ca. mid 1953

Two indicator panels removed

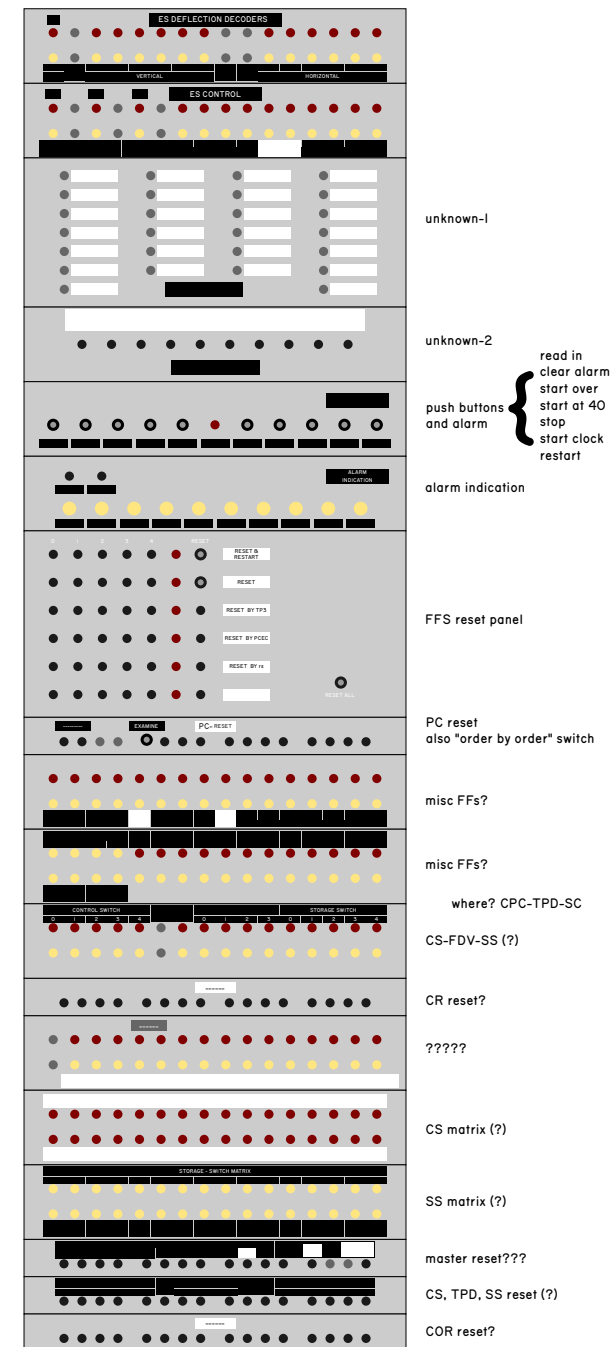
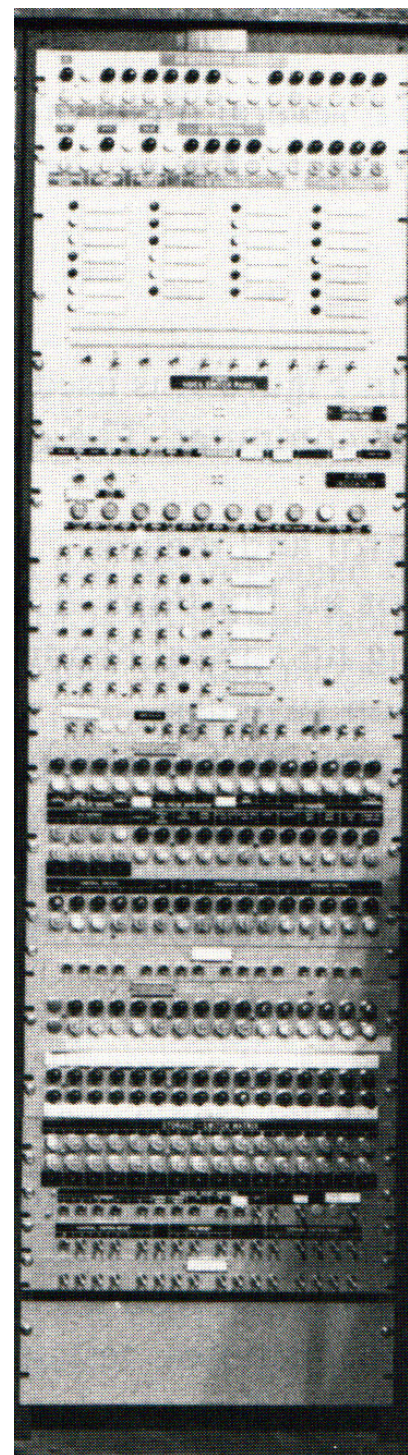
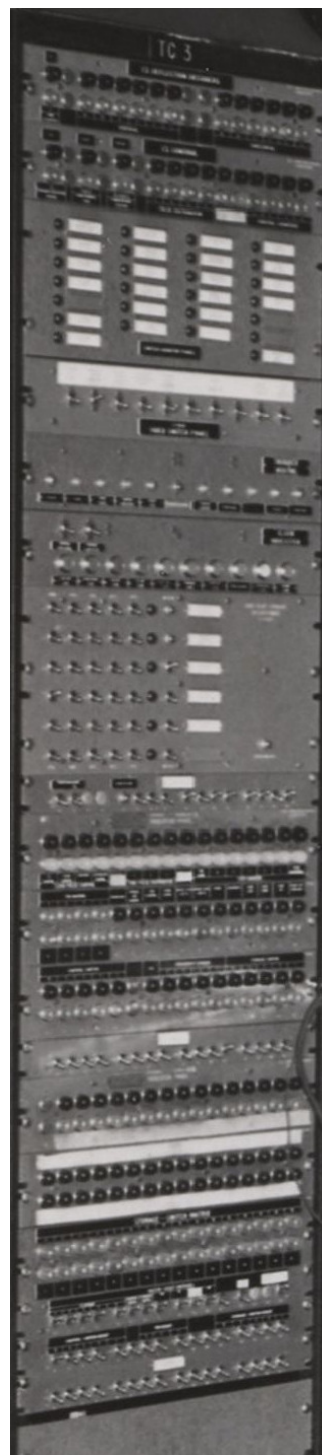
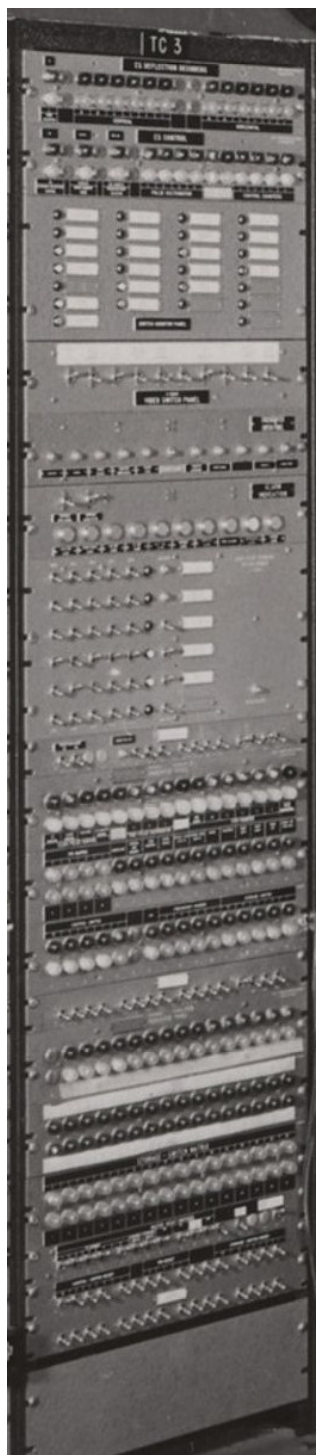
guess: PR, COR (removed from machine)

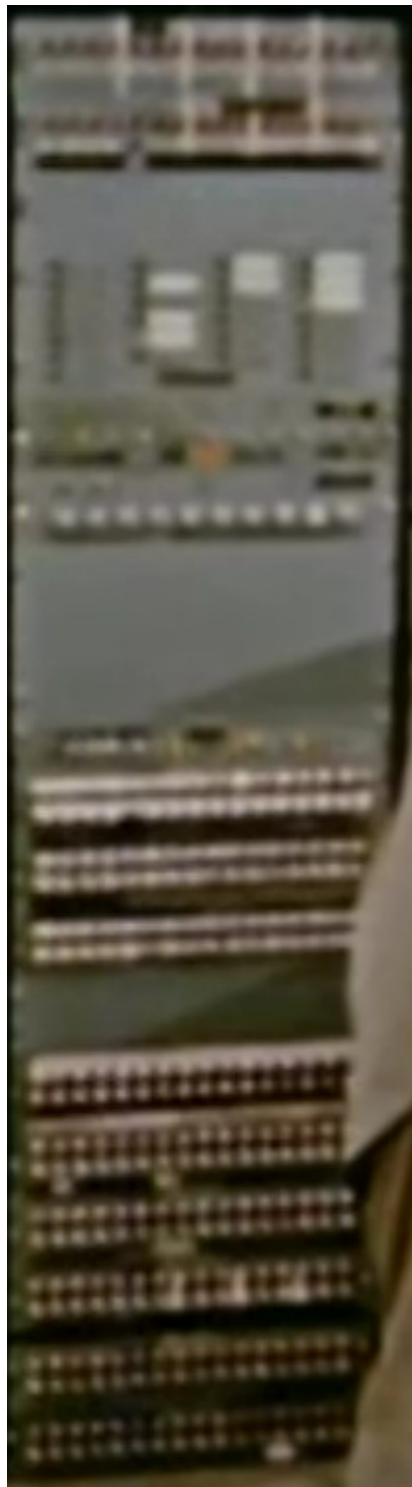
One indicator panel added at bottom

guess: PAR (replaces PR)

some indicators could have been moved to TC-3

ES DEFLECTION DECODERS
ES CONTROL
MANUAL STORAGE SELECTION
STEP COUNTER PRESET
SYNCHRONIZER SWITCH PANEL
ALARM INDICATION
INDICATOR PANEL
INDICATOR PANEL (CPC-TPD-SC)
INDICATOR PANEL (TPD MATRIX)
INDICATOR PANEL (CS-FDV-SS)
INDICATOR PANEL (CS MATRIX)
INDICATOR PANEL (SS MATRIX)
SW. P MASTER RESET
SW PANEL-CS RESET-TPD RESET-SS RESET
SWITCH PANEL (PC)
SWITCH PANEL (CR)
SWITCH PANEL (COR)
CODER (TP)
CODER (PB)
CODER (PBM)
TC-3





unknown-1 moved down
unknown-2 removed
FF reset panel removed
most switch panels removed
3 more indicator panels

Later Test Control

